



Interested in Investing: **Spatial Hub Analytics**

Funding  Strategies



SpatialHub
analytics

Introductions



Nigel Hennessy
Executive Chair
SpatialHub Analytics



Guy Hamilton
Commercial Director
SpatialHub Analytics



Dr. Mark Rainbird
Managing Director
Funding Strategies



Peter Macdougall
Managing Director
Stateland
Investor in
SpatialHub Analytics

Introduction to SpatialHub



Spatial Hub Analytics Pty Ltd is an Australian company offering a geospatial data and analytics software platform called SpatialHub, developed to provide customers with a cost effective and intelligent way to access, model and use spatial data and develop solutions based on Image Intelligence (IMINT).

The initial product, FarmMap4D, currently maps 10% of the total Australian land mass.



The Offer

Raising \$1,500,000 in equity at a pre-money valuation of \$4.7m.

- R1: \$250,000 @ \$0.10 / share
- R2: \$1,250,000 @ \$0.12 / share

Minimum Investment: \$25,000.

Use of Funds:

- Product Development;
- Human Resources;
- Sales and Marketing;
- Working capital.



SpatialHub
analytics

Mapping Systems show but don't Tell!

Geographic Information Systems (GIS) are **display-orientated**, visualising data but lacking meaning.

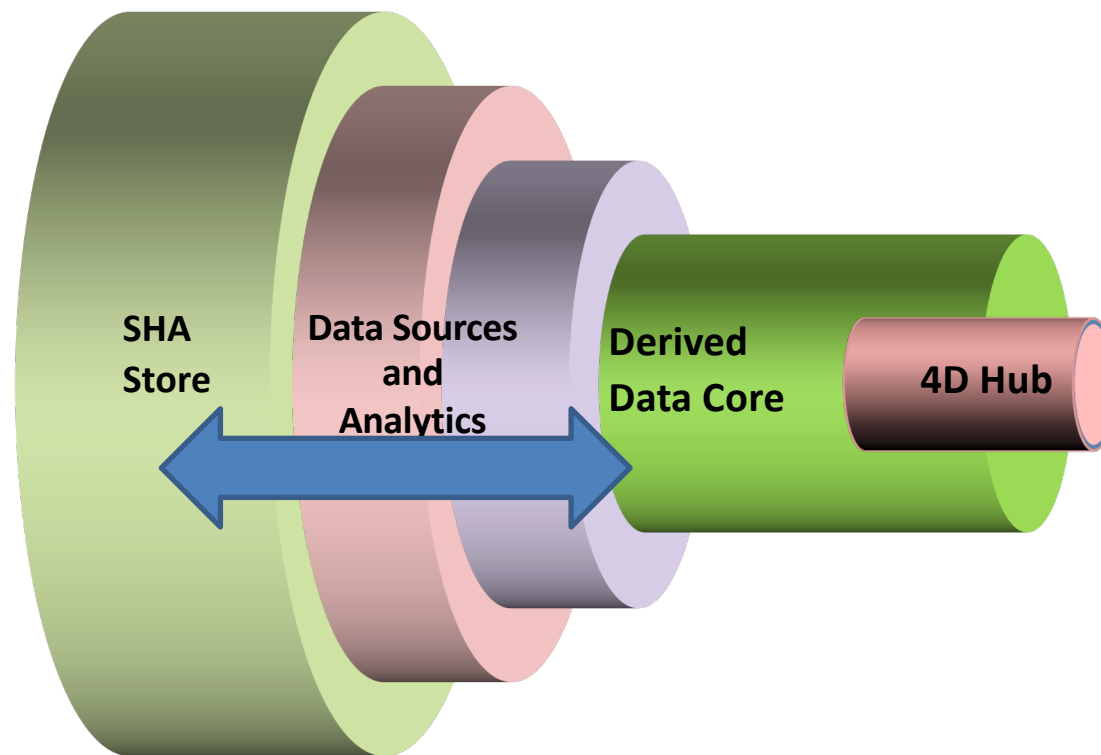


Land users such as farmers, property developers, miners, conservationists need **actionable insight** to improve business performance and optimise their decision making process

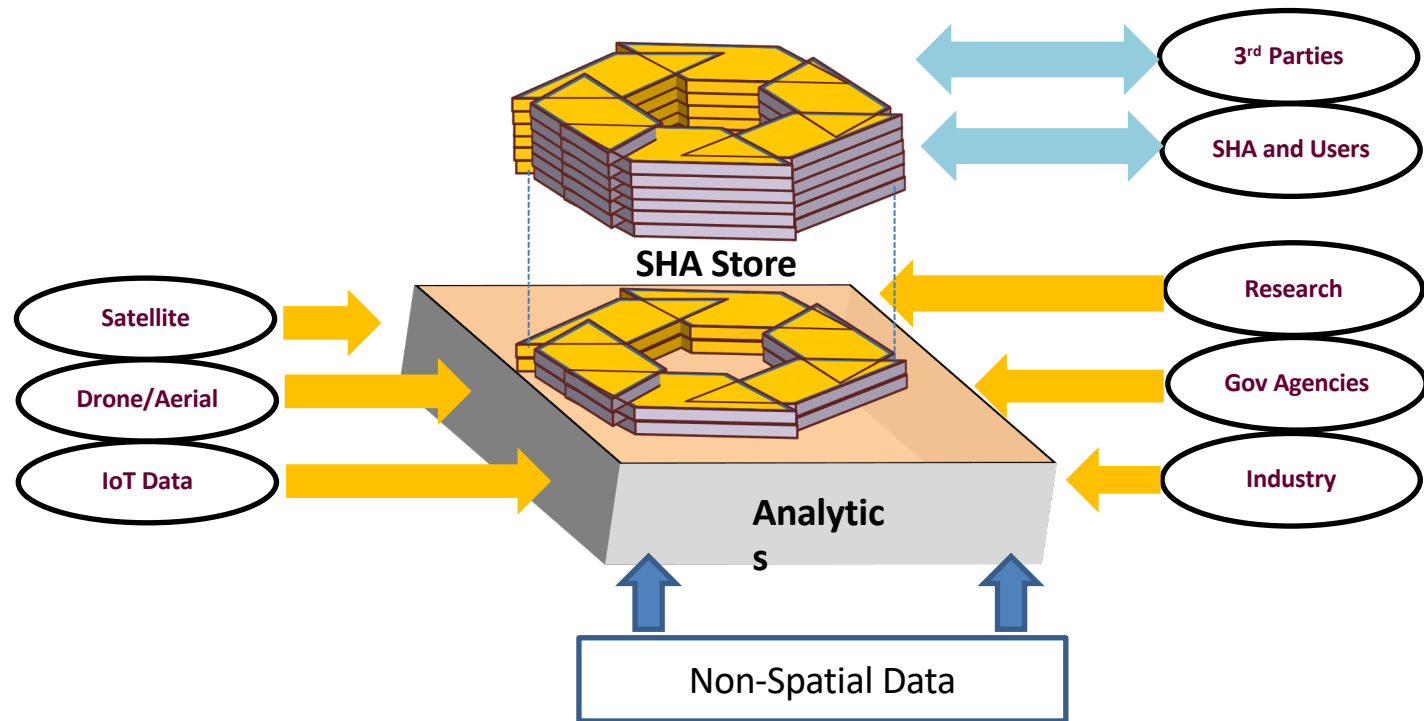


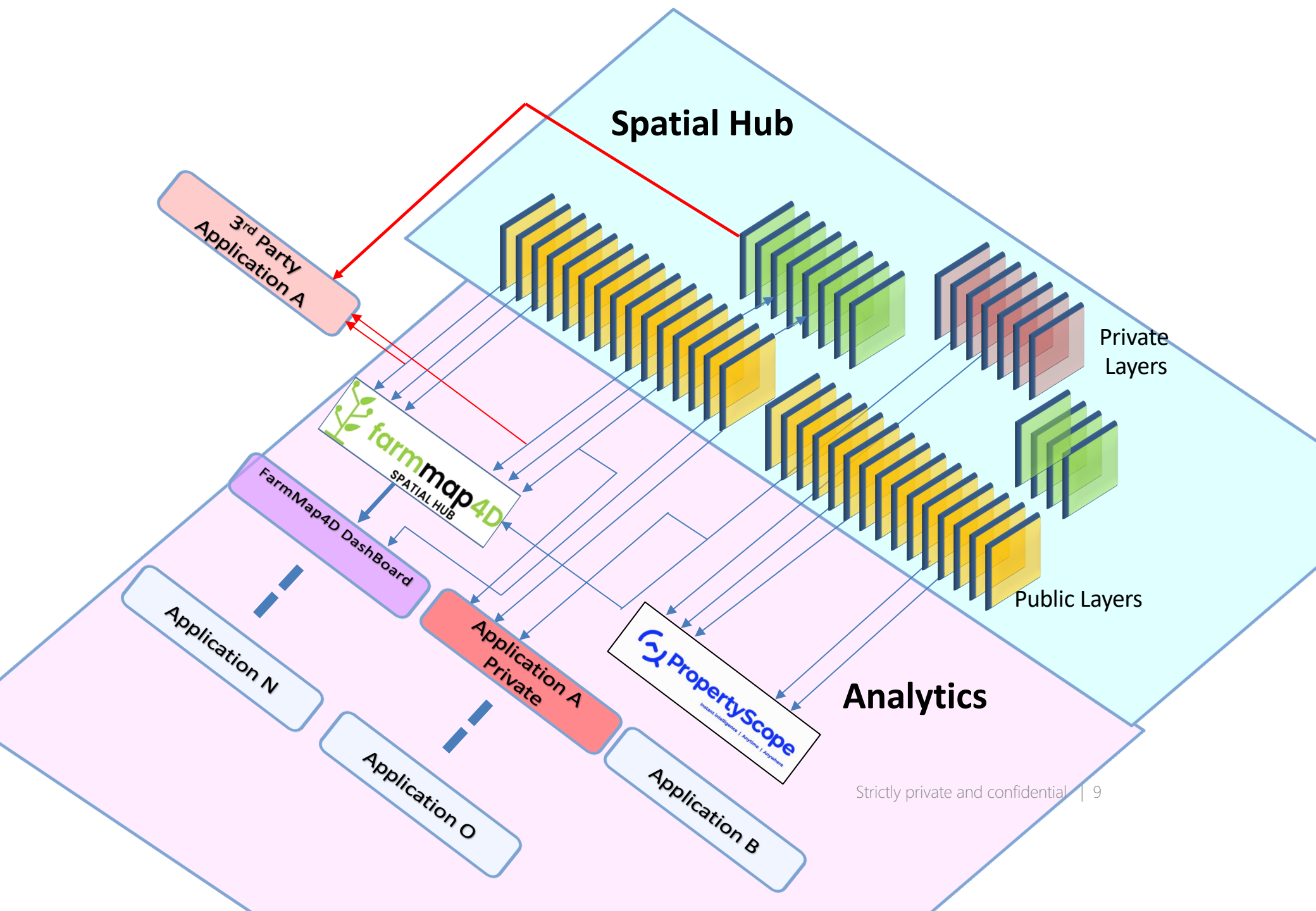
Spatial Hub Analytics® **accelerates property decisions** by turning Data into **INFORMATION**

Spatial Hub Components



Core and 4D Spatial Hub Store



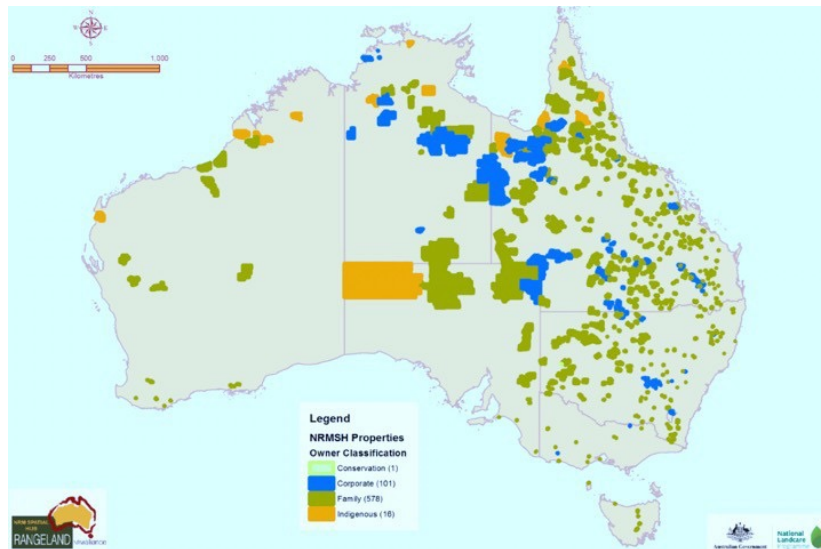




farmmap4D
SPATIAL HUB

SpatialHub's first 'Test' product is widely used already

Backed with \$4 million in R&D, a 'test' product was developed to overcome the problems within the Range Land Cattle sector. The FarmMap4D product delivers sophisticated **data and mapping tools** that support decisions on the cattle farm, by showing AND telling.



SpatialHub have attracted over 800 livestock properties, including major corporates, to the platform.

SpatialHub currently **covers >10% of Australia** and 1.5M of livestock. Payment occurs on Recurring Revenue with multi-year contracts as well as specific projects.

Russell and family own 3 properties, with a holding of approximately 320,000 ha (791,000 acres) & 14,000 head of cattle...

"If we fail to use and embrace innovation there is no way we'll keep pace with our competitors in producing beef. And once you have a play with FarmMap4D, that's when you'll think, what CAN'T it do?"

Our range of products (Nov '21)



Our baseline hub for our extensive data base of spatial data, AI engines and other data.



Professional mapping and data analytics specializing in the Range Land Area sectors with tools that meet the demands of that sector.



Low-cost mapping and data analytics entry product offering Reports as an added extra extending the benefits to new farming sectors.



Comprehensive property data analytics system for the urban real estate sector. Mobile App for ease of use at a site to interrogate property and other data from over 20 sources in real-time.



Climate change impacts water and creates opportunities in Carbon Abatement. This creates **opportunities to audit** emissions and improve **water management** practices among land users.



There is **high uncertainty** in regional areas on how best to substantiate and account for the impact of certain carbon-credit linked activities.



SpatialHub has secured a **pilot partner** to verify selected emission reduction methodologies. The Company has also been awarded two projects on Drought Management by the Federal Government.

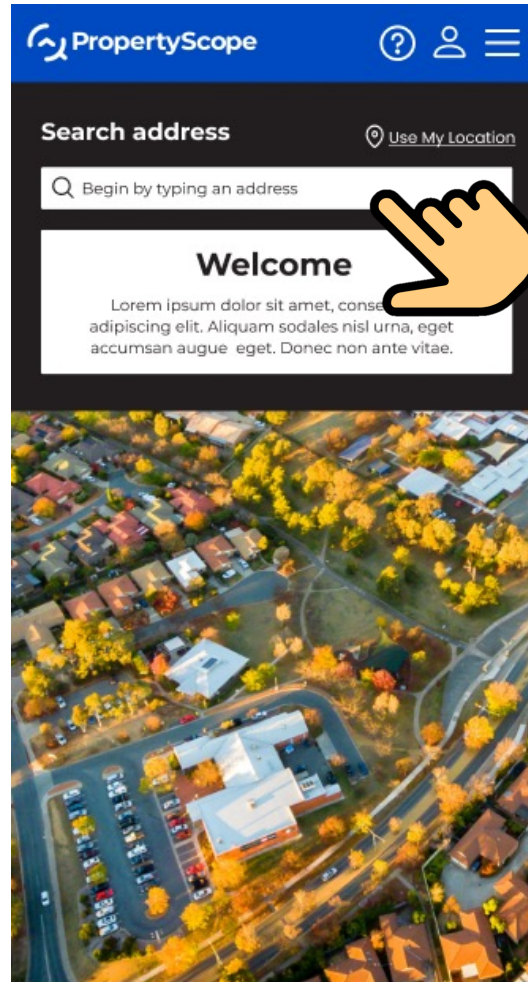


The property market is hot – quick information & quick decision required or miss out!

Making the assessment of property potential quick and simple – today 5/6 hours of assessment – with **Property Scope** 5 minutes.

Today – A Town Planner – \$500-1,000 and 5+ days – with **Property Scope** \$49.99 and less than 3 minutes!

On your phone, in front of a property, intelligence in your hand!



PRIMARY SCHOOL CATCHMENT



School 1: Townsville West State School, West End



JUNIOR SECONDARY SCHOOL



ZONING MAP



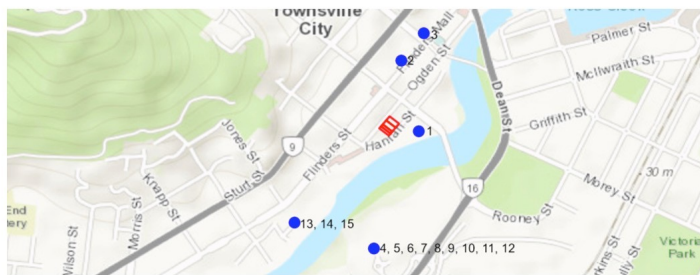
- Open Space
- Principal Centre

MATERIAL CHANGE OF USE:

ACCEPTED DEVELOPMENT

- Adult store
- Bar
- Caretaker's accommodation
- Child care centre
- Club
- Community care centre
- Community residence
- Community use
- Dwelling unit
- Educational establishment
- Bar
- Caretaker's accommodation
- Child care centre
- Club
- Community care centre
- Community residence
- Community use
- Dwelling unit
- Educational establishment
- Emergency services
- Food and drink outlet

SURROUNDING DEVELOPMENT APPLICATIONS



Label	Address	ID	Description
1	502 Flinders Street Townsville City QLD 4810	OP11/0020.16	SPA Compliance Certificates - Compliance with Conditions - CCTV Report - Stormwater - Balance Central Site - Stage 1

ZONES & ZONE PRECINCTS

ZONE	PRINCIPAL CENTRE
ZONE CATEGORY	CENTRE

LOCAL GOVERNMENT	TOWNSVILLE CITY COUNCIL
PLANNING SCHEME	TOWNSVILLE CITY PLAN
VERSION	2020/03

- [View the Principal Centre Zone Code](#)
- [View the Principal Centre Compliance Table](#)
- [View the Principal Centre Table of Assessment](#)

[to Approval - WITHDRAWN - Minor Change to Approval associated with MC15/0021 - City Lane](#)

[ice Certificates - Compliance with Conditions - Civil Drawings](#)

[In Approval - Minor Change to Development](#)

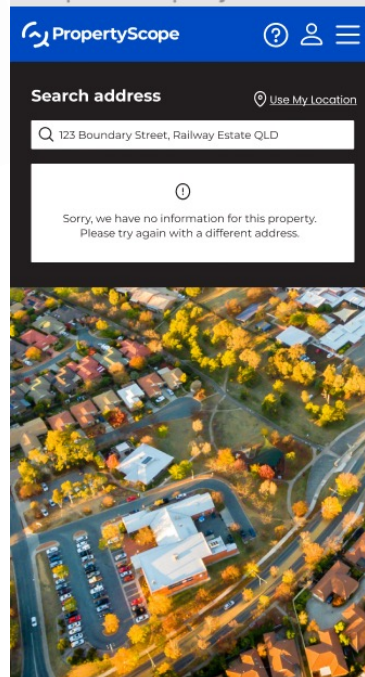
Property Scope has significant and current data covering most LGAs in Queensland. This is being expanded to other LGAs in Queensland and to other States during 2022. In addition, SpatialHub is expanding its product with greater functionality and reporting.

This includes for example valuation and 3D analysis on existing developments and providence via blockchain.

A desktop and interactive mapping option is also being considered.

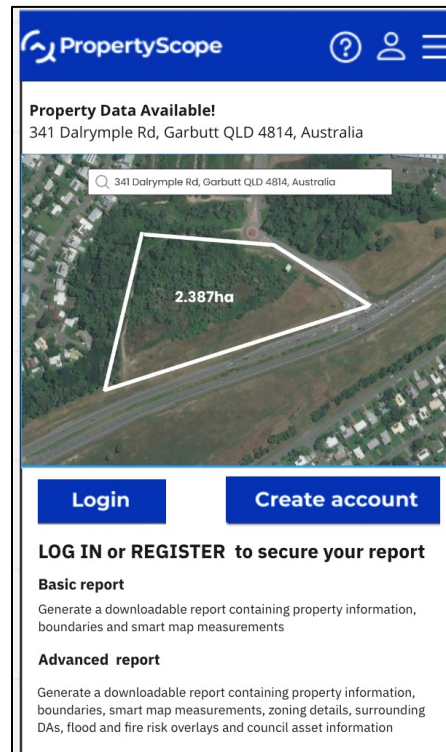
Search for a Property

User alerted that
property not found.



Property found,
address suggests &
prefills

User is prompted to log in or create an account



The image shows a mobile app interface for PropertyScope. At the top is a blue header with the PropertyScope logo, a question mark icon, a user icon, and a menu icon. Below the header, a white box contains the text "Property Data Available!" followed by "341 Dalrymple Rd, Garbutt QLD 4814, Australia". Below this is a search bar with the same address. The main part of the screen is a satellite map showing a green, undeveloped plot of land outlined in white. The text "2.387ha" is overlaid on the plot. At the bottom, there are two blue buttons: "Login" and "Create account". Below these buttons, the text "LOG IN or REGISTER to secure your report" is displayed. Underneath, there are two sections: "Basic report" and "Advanced report", each with a description of the report's contents.

Property Data Available!
341 Dalrymple Rd, Garbutt QLD 4814, Australia

341 Dalrymple Rd, Garbutt QLD 4814, Australia

2.387ha

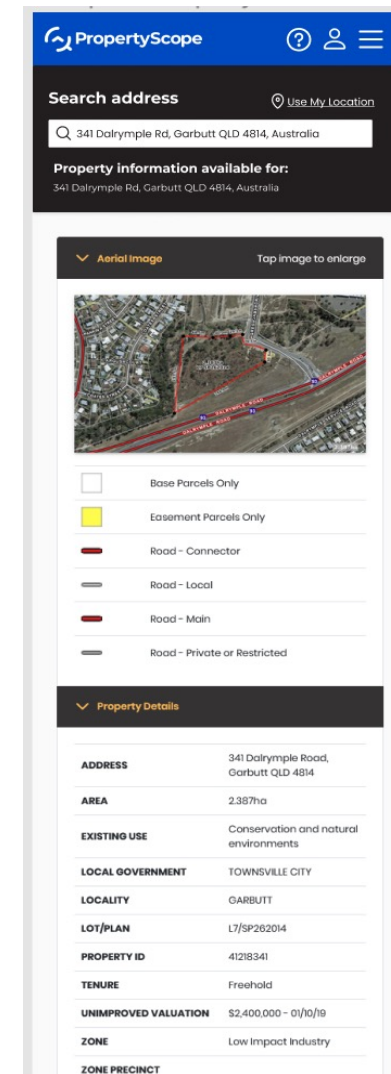
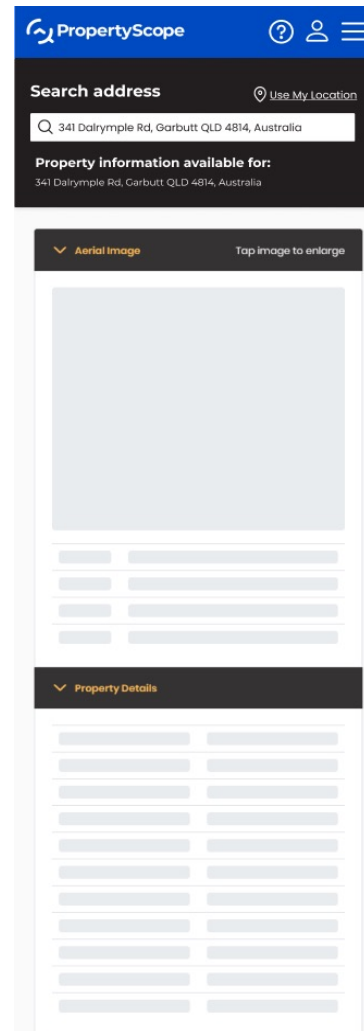
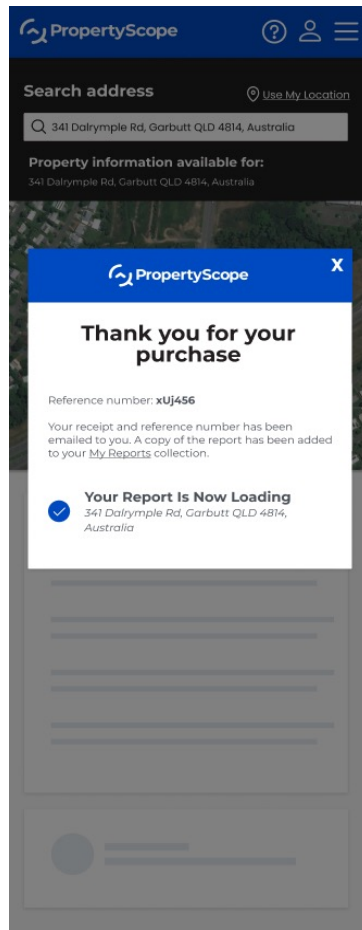
Login **Create account**

LOG IN or REGISTER to secure your report

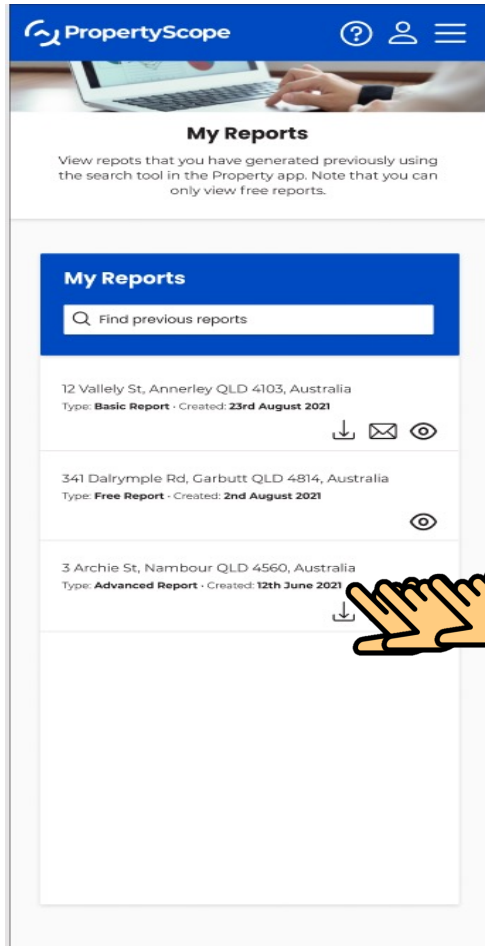
Basic report
Generate a downloadable report containing property information, boundaries and smart map measurements

Advanced report
Generate a downloadable report containing property information, boundaries, smart map measurements, zoning details, surrounding DAs, flood and fire risk overlays and council asset information

Shows skeleton before report loads



Advanced Report Appears in My Reports

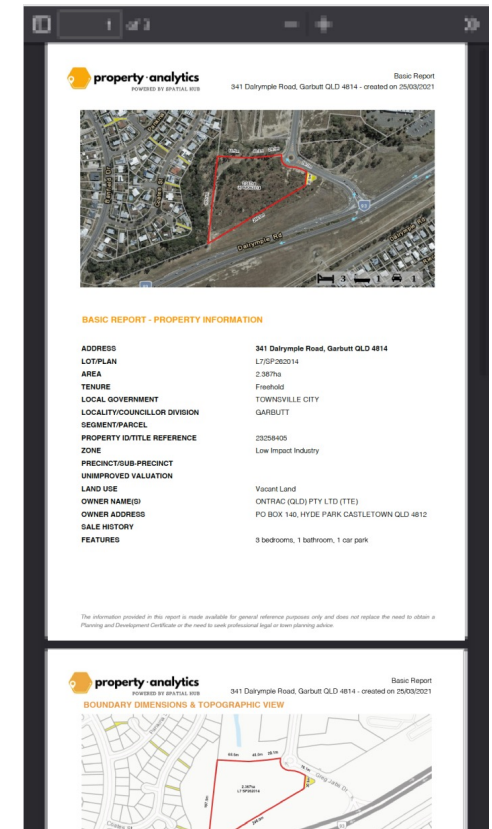


Download

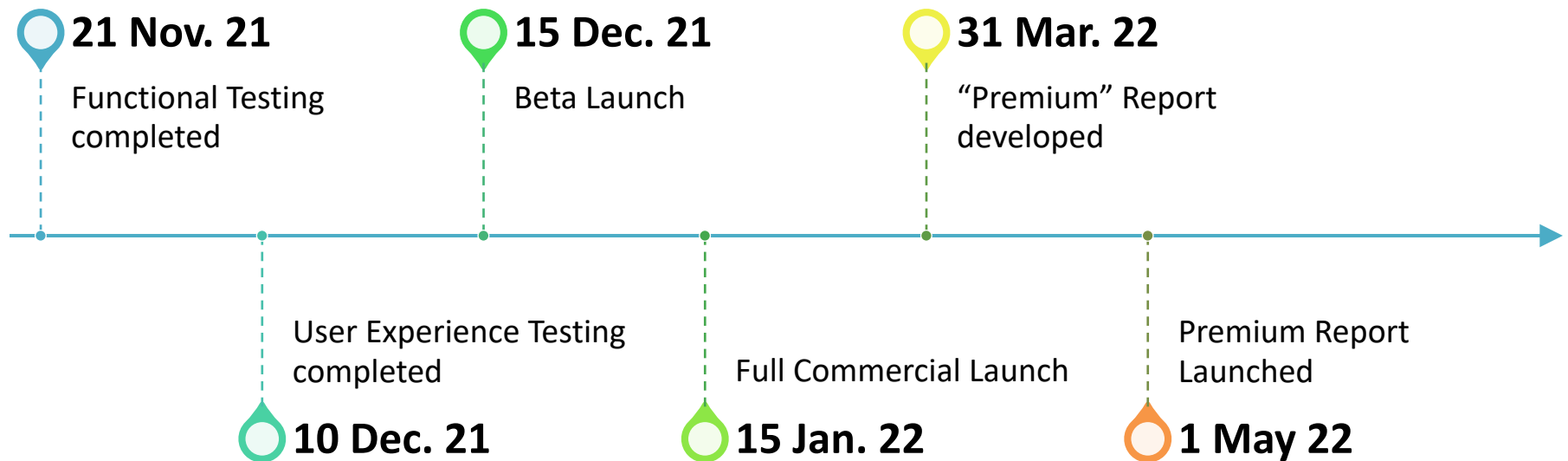
Email

View

Report view



Key Dates





Introducing Peter Macdougall

Peter is the Managing Director and co-founder of Stateland Pty Ltd. Since Stateland's inception in 1994, Peter has sourced and delivered developments across residential and commercial sectors including significant lifestyle residential projects.

From 1984 Peter has been involved in various sectors of the property industry working in Perth, Brisbane and Cairns.



Summary

SpatialHub provides multiple revenue streams via three current products:

- **FarmMap4D Lite** low-cost entry product for farming
- **FarmMap4D Premium** fully functional Range Land Cattle management tool currently being used by over 300 farmers across Australia
- **Property Scope** NEW real estate spatial intelligence tool for the Urban environment. Due for release at the end of November 2021.

Revenues achieved via subscriptions and through specialist reports.
Expected Sales this financial year of \$1.1m.

Strong management team and highly experienced board of directors with proven track records in start-ups and growing multi-million dollar businesses in Australia and overseas. This includes IPOs and Trade Sales.

Strategically driven company. Having achieved success in Rural and Urban the company plans to expand those markets across Australia and overseas. Data agnostics creates an opportunity to expand in Mining and Sustainability sectors.

Questions & Answers

